

Lord of the Flies



English 10
Class Notes on Plot
& William Golding



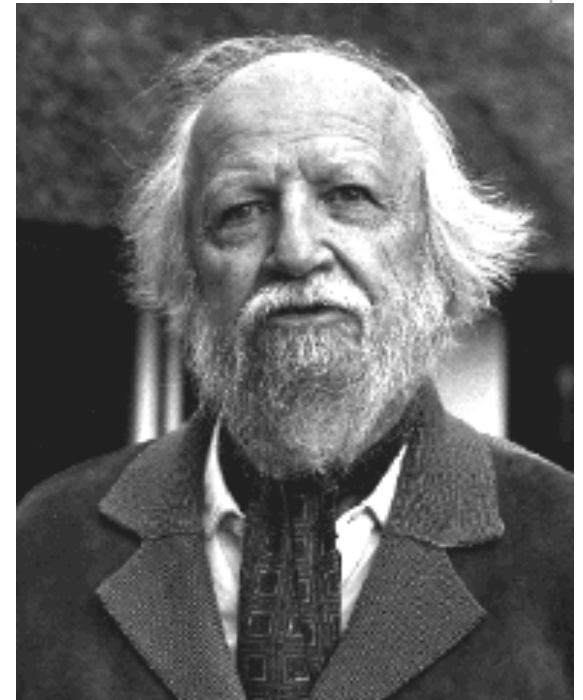
William Golding...

- *Lord of the Flies*, was published in England in 1954.
- The idea came from a children's story about an island coupled with Golding's war experiences.



Author Notes: William Golding

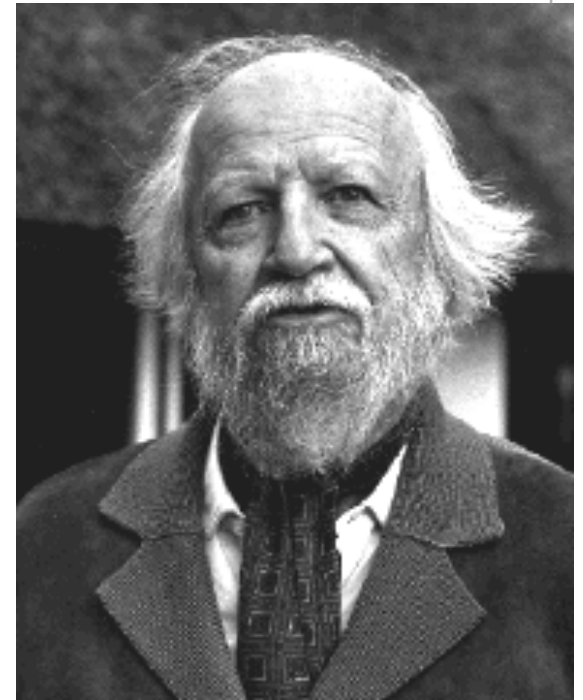
- Golding was born in Cornwall, Great Britain.
- He went to college at Oxford and started out as a natural science major before changing to English literature.
- He worked as a actor, writer, producer, and school teacher.



1911-1993

William Golding

- Golding joined the British Royal Navy and was involved in WWII.
- His experiences in WWII gave him the idea to write a book about human nature and evil.
- He won the Nobel Prize in 1983



1911-1993

Allegory:

- A story, poem, or picture that can be interpreted to reveal a hidden meaning, typically a moral or political one
- A symbol.
- What might this story be an allegory for?

A brief synopsis...



- British schoolboys are stranded on an uninhabited island after a plane crash.
- Island whereabouts unknown.
- During a fictional nuclear war (not WWII).

Continued...



- 2 boys serve as main characters in the beginning.
- Elementary – middle school aged boys.

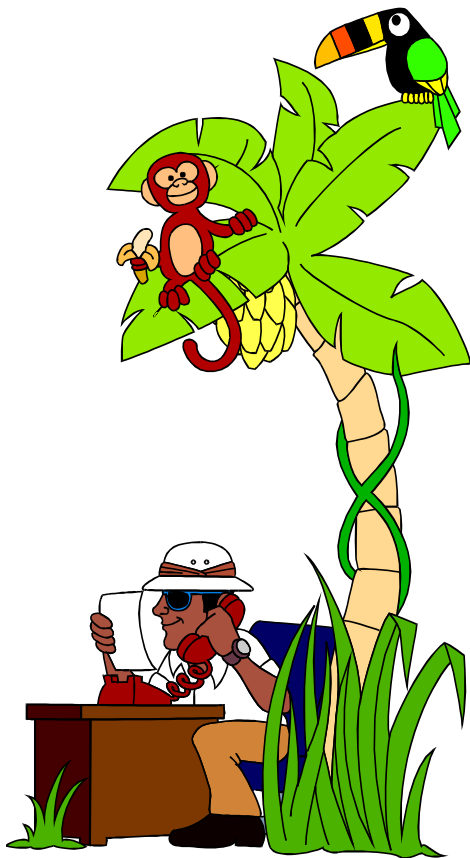
You might hurt your brain....

...If you over think this story.



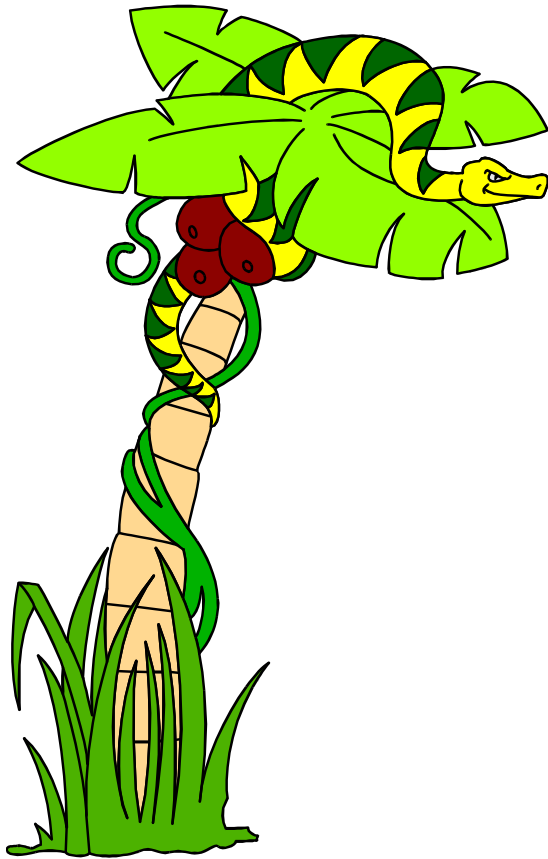
- Don't think about all adults dying and all children alive.
- Don't think about where they were flying.
- Don't think about the island location.

A look at society...



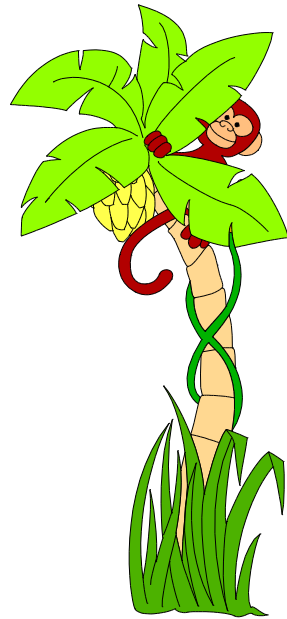
- Realizing there are no adults, the boys try to follow the rules of society.
- The division of labor is agreed upon.
- A mini society is formed.

Emotions



- What types of emotions might play out?
- A “beast” is on the island. Where might the best come from?
- Words of a famous president “We have nothing to fear...”

Good vs. Evil...



- Laced with fears, a struggle for power begins.
- The boys become more and more fascinated with their savage side.

Nature vs. Nurture...



- Discussion:

- Evil = Born with it.

Or

- Evil = Raised with it.

Is Society evil?

Themes

- Humanity needs civilization.
- Contrary to the belief that man is innocent and society evil, the story shows that laws/rules/structure/society are necessary to keep the darker side of human nature in line.
- When these concepts slip away or are ignored, human beings revert to a more primitive part of their nature.

Behind the Theme

- Evil (the beast in the novel) is within man himself.
- Golding implies that evil is not created but is ingrained within us all.
- Loss of innocence is needed in order to see reality and for humanity to survive.
- Age is not directly related to innocence...young can be corrupt/structure can save.

Humans

Civilization



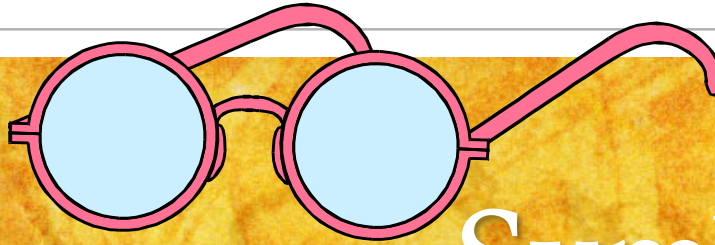
...Maybe there is a beast...
maybe it's only us...

- Simon

- This quote directly portrays the message that Golding is trying to express; that the heart of man is not good and kind, it is selfish and corrupt.

The Significance of the Title

- In the novel, it refers to a pig head on a stick, an offering to the “beast.” It becomes the beast...sort of.
- “Lord of the Flies”
- Bible: Jesus refers to Satan as “Beelzebub”; Hebrew for LOTF



Symbolism

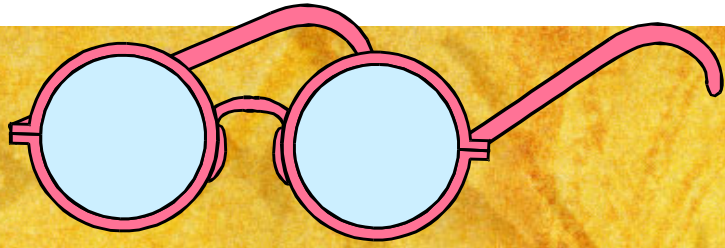
BE ON THE LOOKOUT! THERE ARE LOTS OF SYMBOLS IN THIS BOOK!
IT'S LIKE A GAME OF WHERE'S WALDO!!!!

Conch shell

- Must have in order to speak
 - Make predictions. What might physically happen to the shell and what might that mean?

Glasses (specs)

- Used to start a fire
 - Make predictions. How might this symbol play into the book? How might it change over time?



Symbolism

- Golding uses symbols to represent different meanings within the book. Examples:
 - The title *Lord of the Flies* = Evil
 - A seashell used to call the boys and designate a speaking order might represent?
 - Keep an eye out for anything that could be symbolic (There are lots of them!).

...Characters as symbols

- In addition to objects, people/characters can be symbolic too.
- What are various character traits that can be used to describe humans?
- Golding attempts to emphasize this point by giving certain characters stronger attributes (one character embodies wisdom, one evil, etc.)

The Island

- The island is a perfect microcosm. It is like an ant-farm.
- A microcosm is a _____.
- Population of leaders/followers.

The Symbolism of the Island

- Different areas of the island are associated with different ideas.
- Beach = Dreams/hope of rescue
- Mountain = ?
- Bush/Forest = ?
- Rocky-outcrop = ?

Sketch of the Island



The heart of the matter...

“The heart of the human condition is the condition of the human heart.”

- This is relevant because...



Is our civilization really
civil?